

Connected  
Map

Infrastructure  
Accelerator



# 5G Case Study

## The Connected Map

# Synopsis

The West Midlands is the first region to produce and test a Connected Map, driving a solution that will enable us to become #5GNetworkReady.

West Midlands 5G has mapped out the region's local authority assets that are suitable for mobile network digital infrastructure. Together with existing coverage plans from mobile network operators, WM5G has created a powerful tool to accelerate the deployment of 5G across the region and help close existing 4G coverage gaps.

WM5G's Connected Map also serves as an interactive tool to illustrate the true picture of digital infrastructure, enabling local authorities and mobile network operators to review their priorities and plan for the future – together.





## Problem

The Government wants to open up public assets for digital infrastructure – but there is no simple way to find public asset data and then gain access to the asset.



## Solution

Build a digital map with all public asset information (more than 300,000 assets), mobile sites and fibre data.

Create a process with local authorities that allows quick access to assets using standard agreements



## Benefit

Enable mobile network operators to quickly identify and access public assets to deploy 5G networks

Accelerate coverage in Coventry's City of Culture locations, at Birmingham 2022 Commonwealth Games landmarks and across key 'mobility zones' aligned to new tram, rail and HS2 plans

“

---

In some cases, we've accelerated the installation of 5G sites by 6 months or more. How have we achieved this? Cutting through all the red tape, adopting standardised approaches and encouraging co-operation between all parties.

”

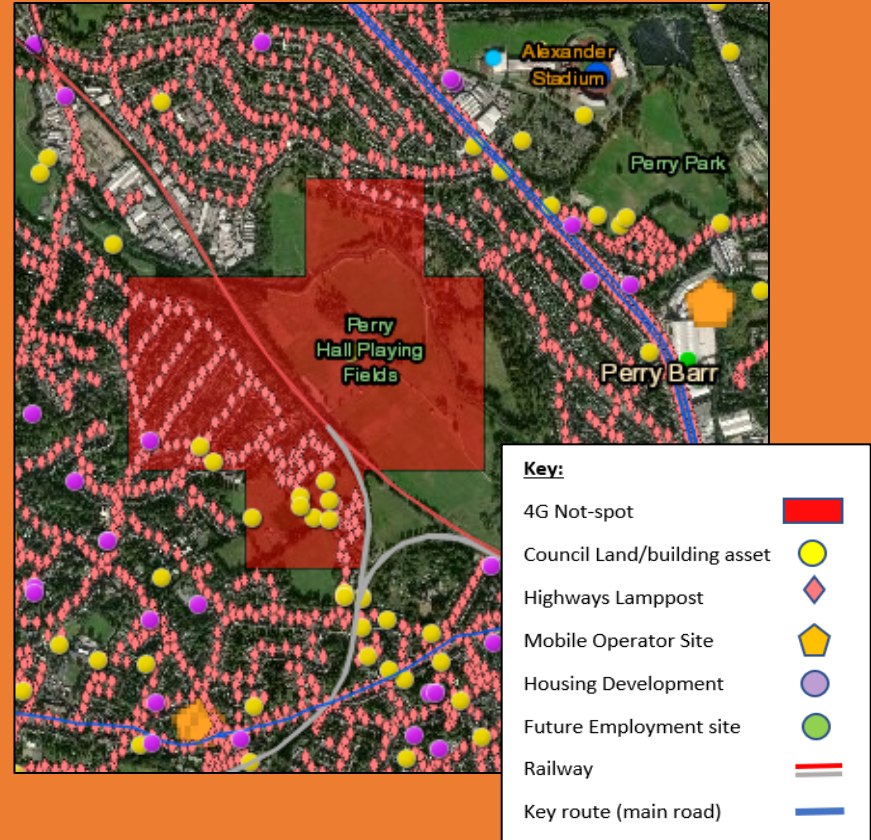
Rhys Enfield, West Midlands 5G

# Connected Map in action

This example shows an area of poor 4G coverage (or not-spot) for an unnamed mobile network operator. With the Connected Map, we are able to see more than 100 houses, a future housing development and a mainline railway within the area. There is also a main road and Birmingham 2022 Commonwealth Games location just outside this area, where coverage may also be poor.

We now have a business case to improve coverage in this area. The Connected Map highlights over 20 public assets and hundreds of suitable small cell infrastructure locations to us – evidencing a problem but identifying a solution.

The Connected Map gives visibility of a wide range of assets that can be utilised for small cell development – which drives wider coverage and availability. These benefits align with WM5G's aim of getting the West Midlands #5GNetworkReady.



# Takeaways

## Sustain



The Connected Map may be in place, but it needs to be continually updated to ensure it remains a relevant and useful tool. It is what the data shows and how it is used that will really ensure we step into a 5G-enabled future.

## Learnings



Engagement, conversation and collaboration ensure WM5G can deliver benefit to its citizens and businesses. Building trust and understanding the needs of all parties has enabled WM5G to progress thus far.

## Contacts



West Midlands 5G Infrastructure Acceleration Team  
E: [enquiries@wm5g.org.uk](mailto:enquiries@wm5g.org.uk)

## More info



[www.wm5g.org.uk](http://www.wm5g.org.uk)





[WM5G.org.uk](http://WM5G.org.uk)

[enquiries@wm5g.org.uk](mailto:enquiries@wm5g.org.uk)