

Co-Production

Alice Vickers

Children's Innovation Lead

What is Co-production?

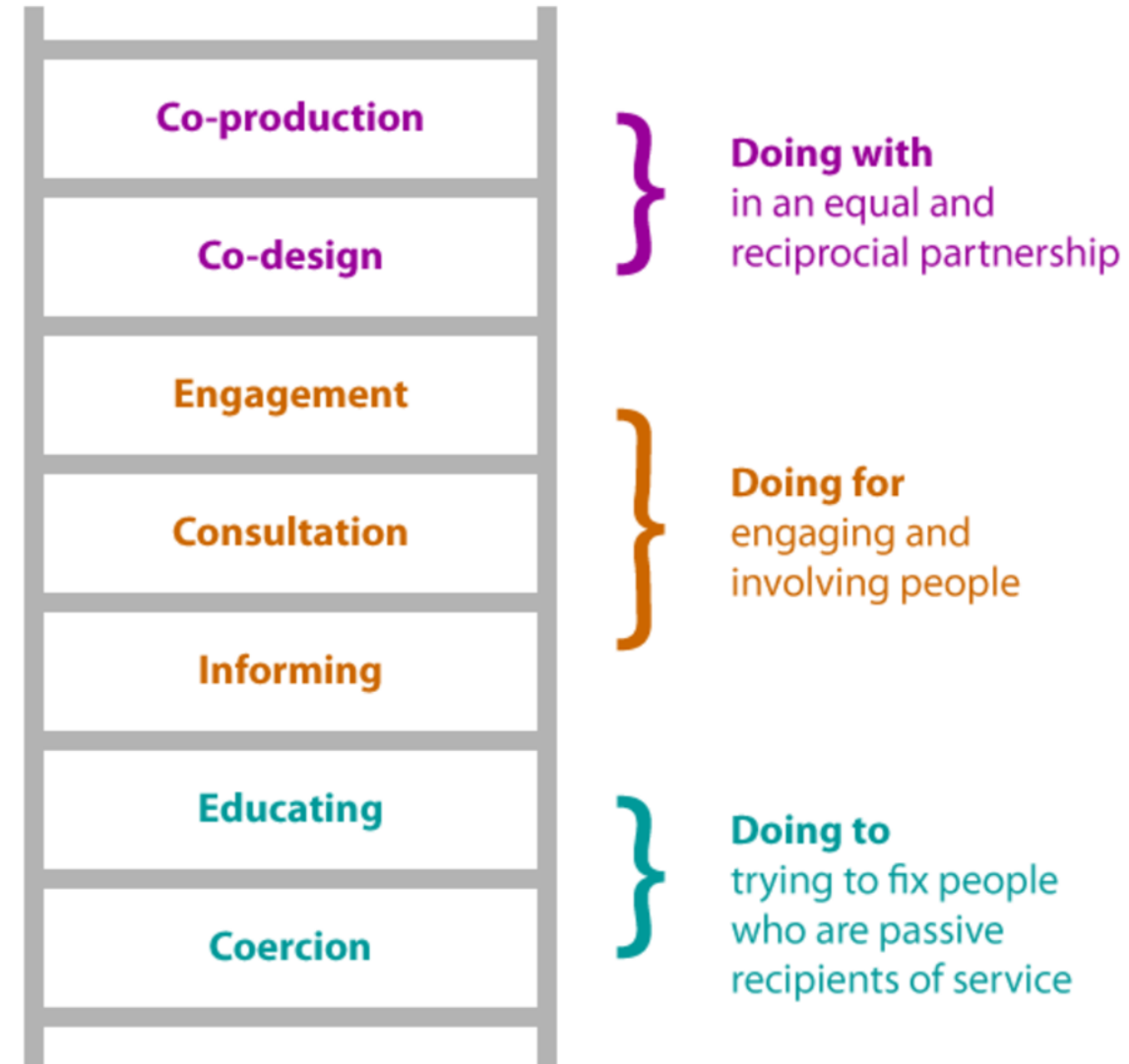
Co-production builds upon a range of similar approaches such as consultation, engagement and co-design.

Clearly showing the difference between co-production and these related, but different, approaches is important if real co-production is to be put into practice.


The ladder of co-production is a useful way of making these important distinctions.

Strong links to restorative practice in terms of doing with


Three Conversations seeing people as experts by experience







There are two types of Co-production:

- **Individual** – This includes the participation and engagement of people in discussions and decisions about their individual support and about local provision. That people participate as fully as possible in decisions and are provided with the information and support necessary to enable participation in those decisions and to help them achieve the best possible outcomes.
 - **Design and strategic level** – At a strategic level, partners should engage with people in commissioning decisions, to give useful insight into how to improve services and outcomes. Develop effective ways of harnessing the views of the local communities so that commissioning decisions on services are shaped by people, local communities, ambitions and expectations.
- 

Co-Production Charter for Children, Young People and Families

This charter is a set of principles and promises of working together with young people and families to ensure they remain at the heart of decision making.

We believe that young people and their families are best placed to shape the services and support they receive.



We commit to delivering this promise using the following principles:



Trust

There will be no conversations about you without you
We decide priorities together
Together we will find the best solution



Shared understanding

We all agree about what we want to achieve
We agree on what 'good' looks like
We will be mindful of everyone's commitments



Equal partnership

Everyone can take part. Whatever their needs or abilities
We can learn a lot from each other
We are all in this together!



Creative thinking

We will plan creatively and do things differently
We will work in a way that's best for you
Finding the right solution may take longer but that's ok



Communication

Everyone will be kept informed and updated
We will be clear about what we can and can't do
Information will be accessible for everyone



Experts By Experience Forums

Youth Council

- Children and Young People Scrutiny Panel

#YES Board

- Children and Families Together Board

HYS

- SEND Partnership Board

Children in Care Council

- Coporate Parenting Board

Care Leavers Independent Collective

- Coporate Parenting Board

Families on Board

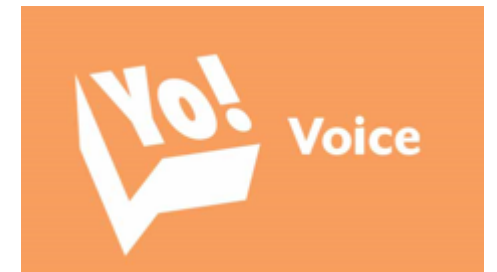
- Family Hub Steering Group

Guardians Forum

- Emotional Health and Wellbeing Board

Adult Social Care Users Forum

- Adult Leadership Team



Young Inspectors

- Throughout this year, the #YES Board with support of their peers on HY5 have been inspecting provision
- As part of these inspections the young people assessed how physical activities were being carried out and if they are inclusive.



Dragon's Den

- **New providers applying for grants to run HAF and #YES activities have to attend an interview with members of the #YES Board**
- **Here young people have produced their own questions and score them their responses**





Service Development

- Local Account
 - Corporate Parenting Strategy
 - All Age Carers Strategy
 - Young Carers Service Specification
 - WSOA
 - Emotional Health and Wellbeing Service
-



Wider Voice

- Youth Election for Youth MP
- Make Your Mark
- CiC and CL Annual surveys
- SEND annual Survey
- Local Account

Recruitment

All Children Workforce
monthly children and young
people panels





Training

- Total Respect
- Inspiring Change



When planning to develop a service/provision, things to consider:

- **Time**
 - Ensure service users and relevant stakeholders have notice of the timeline to implementation
 - Understand the issue or need wanting to be overcome by the service/provision
 - Work out a plan to meet the highlighted need
- **Resources**
 - Support and facilitation in developing ideas and information gathering
 - Access to information/data to inform

Breakout rooms – Benefits of Coproduction

In your small groups think about the **benefits of Coproduction** for the following;

- **People**
- **Carers**
- **Practitioners**
- **Decision Makers**

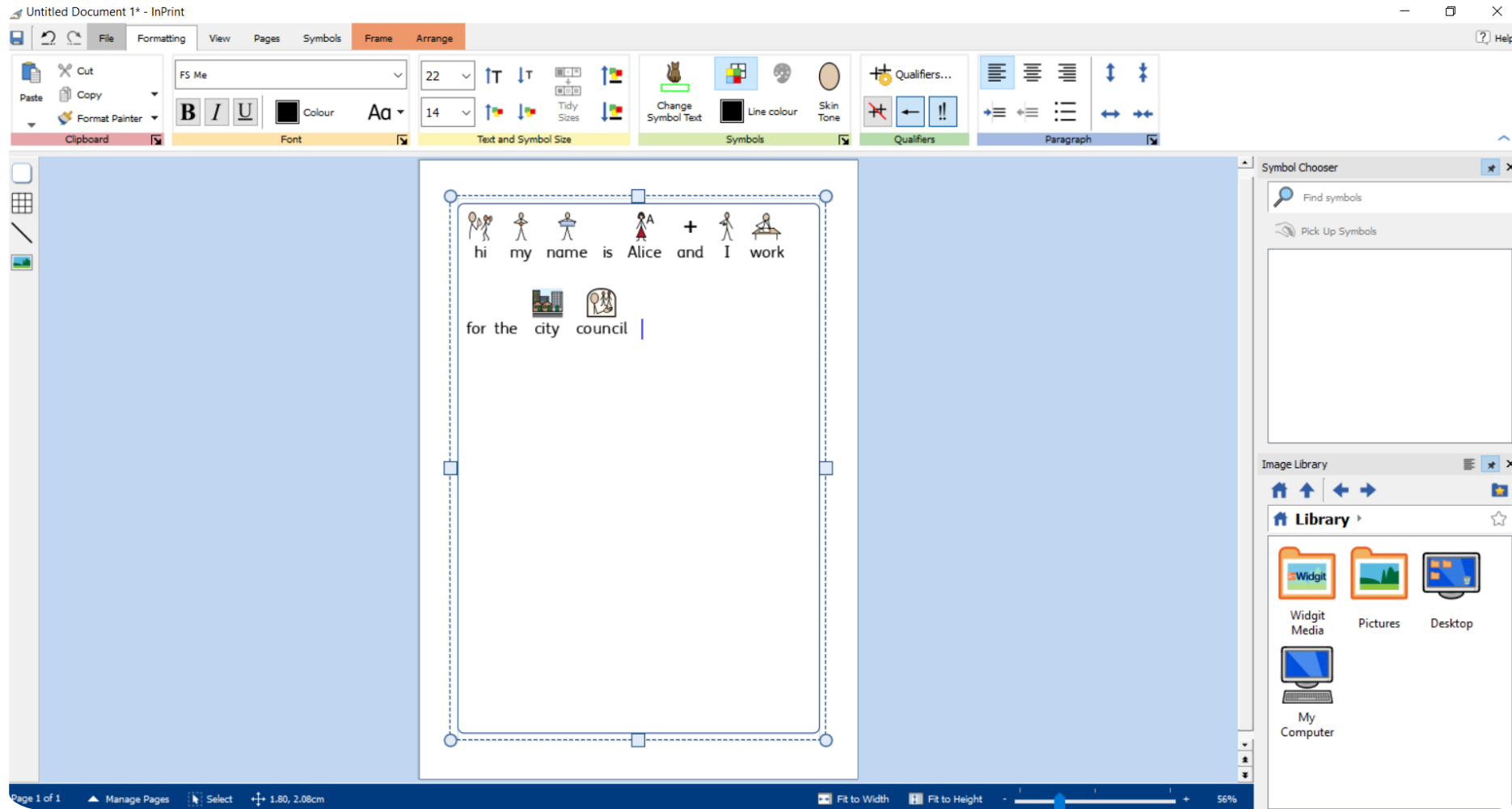


Digital tools to support Co- Production

- Widget
- Microsoft Forms
- Menti
- Google Jamboards

Widget

<https://www.widgit.com/products/widgit-online/index.htm>



Microsoft Forms <https://forms.office.com/>

The screenshot shows a Microsoft Forms survey titled "Community Resilience Audit". The survey is set against a background of a stylized cityscape with green hills and trees. The survey content is as follows:

Community Resilience Audit

Mitch Hawkins | University of Tasmania | XBR206 Resilience in the Face of Emergencies

This audit is to assess your households resilience to an emergency. In this hypothetical scenario the services to the place where you live (i.e., the electricity, gas, water) are out off and the roads in and out of the neighbourhood are not traversable. You are confined to your place of residence for 5 days and no help will be arriving to your neighbourhood over that period.

1 General - how many persons are there in your household?

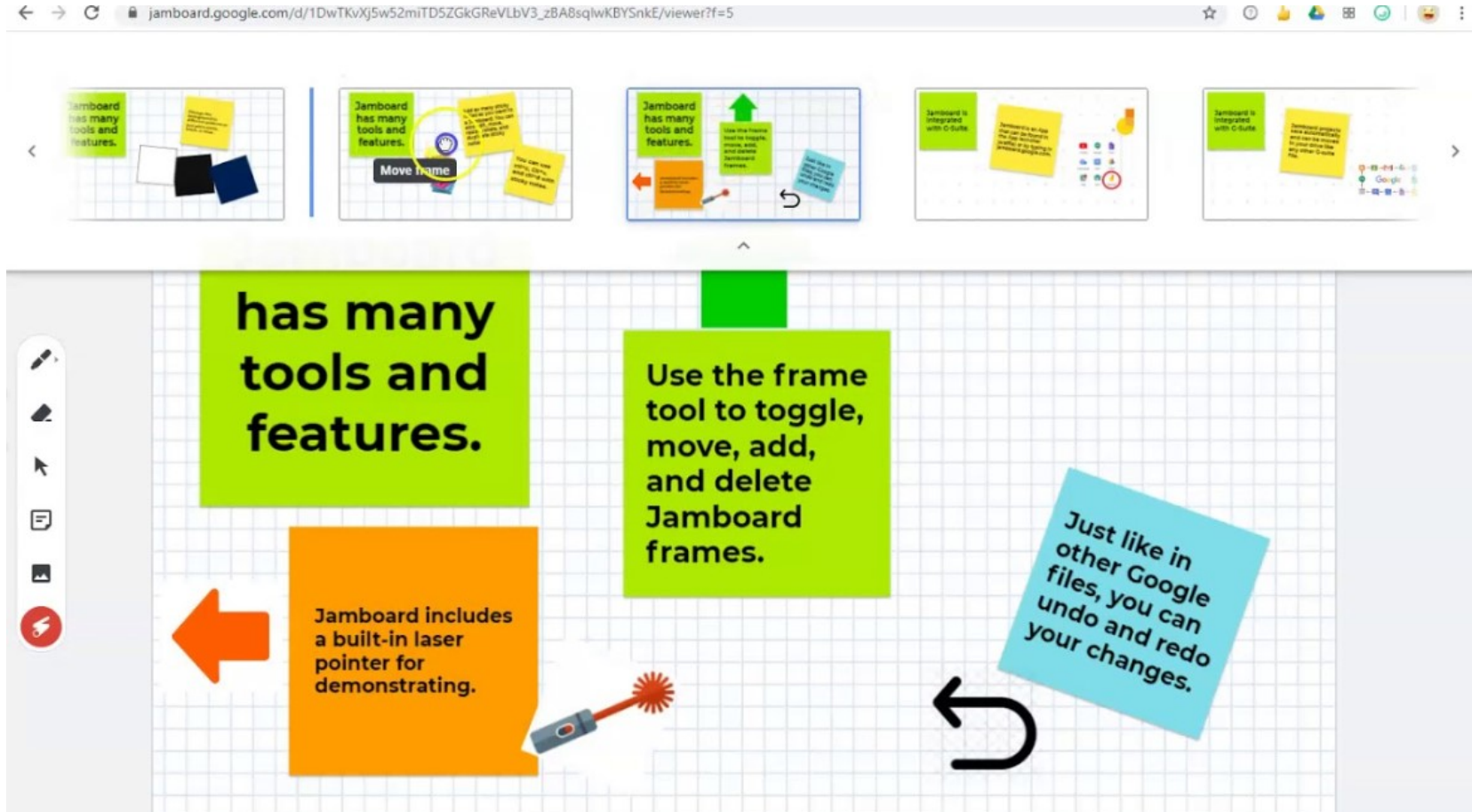
Enter your answer

2 Physical readiness - does your household have these items available (per person/per day)

	Yes	No	Don't know
Drinking water non-mains (3 litres)	<input type="radio"/>	<input type="radio"/>	<input type="radio"/>
Non-perishable foods	<input type="radio"/>	<input type="radio"/>	<input type="radio"/>

Google Jamboards

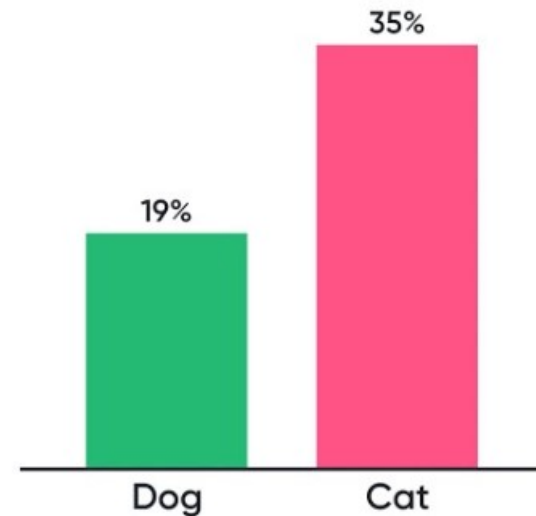
<https://jamboard.google.com/>



Mentimeter

Interactive presentation software – Mentimeter

Multiple Choice Questions



What Tools have you used?

